

2MP 15M IR POE Mini Dome IP Camera

AirCam MD-215

airlive®



2MP
1920x1080

2.8mm
Fixed lens

15M IR
D-WDR

Mini
Dome

H.265
H.264

RTSP
OnVif

IP66
Waterproof

48V
PoE

Android IOS
APP Supported

Overview

Experience superior surveillance with our 2MP 15M IR Mini POE IP Camera, AirCam MD-215. Achieve crystal-clear image quality with autofocus technology. Benefit from powerful 15-meter infrared night vision, ensuring comprehensive coverage day and night. Enjoy easy installation via Power over Ethernet (PoE) for hassle-free setup and monitoring.

Mini Night mode PoE Dome

The MD-215 Mini Night Mode PoE Dome is a compact yet powerful surveillance camera. Designed for low-light conditions, it delivers exceptional night vision capabilities. With Power over Ethernet (PoE) support, installation is effortless, and its discreet dome design makes it ideal for various indoor applications where discreet surveillance is essential. Ensure reliable security round the clock with this versatile and compact dome camera.



Features

- Featuring a 1/2.8" Sony IMX307 CMOS sensor, our camera delivers Full HD resolution at 1920 x 1080P, ensuring sharp imagery.
- The camera boasts 10PCS Array IR Led for an impressive 15M IR distance
- With exceptional sensitivity of just 0.001Lux, it excels in low-light conditions, providing clear visuals.
- Equipped with Day/Night capabilities, AWB, AGC, BLC, and 2D/3D-DNR, it consistently delivers optimal image quality.
- Additional functionalities include D-WDR, Motion Detection, Privacy Mask, and Mirror.
- It seamlessly integrates with RTSP and Onvif 17.06 and supports both H.265 and H.264 dual-stream media server encoding.
- Enjoy mobile accessibility through Android/iOS App Support, and benefit from an internal microphone for audio capture.
- Power it via IEEE802.3af PoE and trust in its 4000V lightning protection and IP66 waterproof housing.

2MP 15M IR POE Mini Dome IP Camera

AirCam MD-215

airlive®

IP Camera Android/iOS App Support App. Search VideoLink

Our IP Camera boasts Android and iOS app support, providing convenient access to your surveillance system.

The user-friendly app, "VideoLink," allows you to effortlessly search and view video feeds. Stay connected and in control, monitoring your property from your mobile device with ease and convenience.

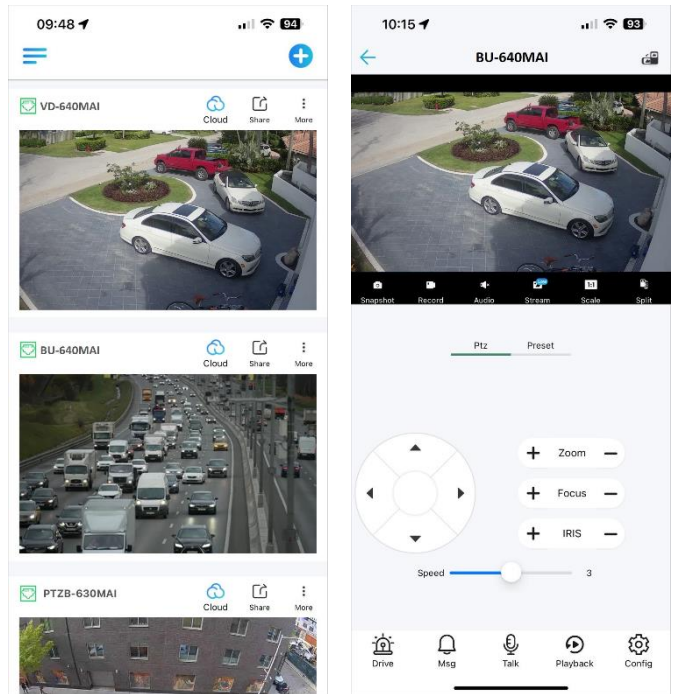
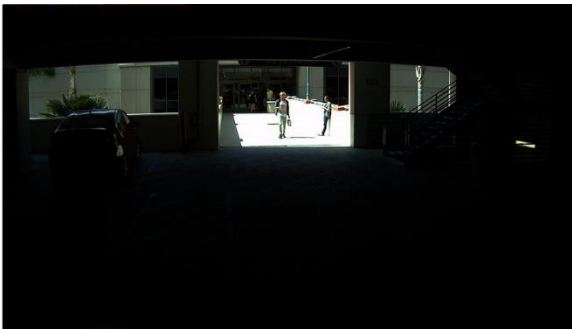


Image Enhancement: D-WDR, Mirror, Rotate, and Defogging functions

The AirCam MD-215 takes image enhancement seriously, offering a suite of advanced features. Digital-Wide Dynamic Range (D-WDR) balances exposure, ensuring well-lit scenes in challenging lighting conditions. Additionally, it provides the ability to mirror and rotate images as needed, enhancing flexibility in surveillance placement. Furthermore, the integrated Defogging function improves visibility in misty or foggy environments, ensuring that you get clear, detailed footage regardless of adverse weather conditions. These features collectively enhance the camera's performance and its suitability for various monitoring scenarios.



WDR OFF



WDR ON

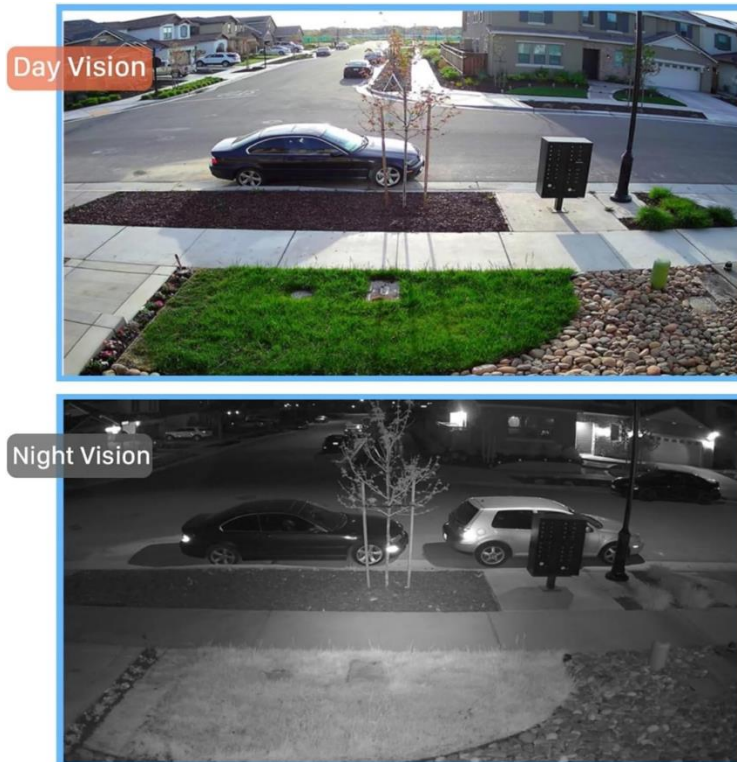
2MP 15M IR POE Mini Dome IP Camera

AirCam MD-215

airlive®

AirCam MD-215 10 SMD Array IR LEDs with a 15-meter IR distance

The AirCam MD-215 is equipped with 10 SMD array IR LEDs, delivering powerful infrared illumination. With an impressive 15-meter IR distance, it ensures exceptional night vision capabilities, providing clear and detailed surveillance footage even in complete darkness. Whether it's monitoring large outdoor areas or dimly lit spaces, this camera guarantees reliable 24/7 security coverage, making it a robust choice for various applications.



Model	AirCam MD-215
<p>Interface</p> <ul style="list-style-type: none"> • Network Interface: PoE 802.3af 1x RJ45 10M/100M • Media: AirCam64, Android, IOS , NVR • Onvif: 17.06 compatible • Standard: HTTP/RTSP/FTP/SMTP/DHCP/NTP/NFS <p>Camera</p> <ul style="list-style-type: none"> • Image Sensor : 1/2.8" SONY IMX307 CMOS • CPU: Mstar MC335 • Effective Pixels : 2 Megapixels • Electronic Shutter : Auto, 1/25s ~ 1/100000s • Min. Illumination : 0.001Lux@F1.2(AGC ON), 0Lux IR on • Day/Night : Auto/Color/(B/W)/Timing • WDR : Digital WDR/HDR(> 120dB) • White Balance : Auto/Indoor/Outdoor • BLC /HLC : Support • DNR : 2D/3D DNR • Other : Motion Detection, Privacy Mask, Mirror, flip • Mechanical: Waterproof IP66 Housing <p>Encode</p> <ul style="list-style-type: none"> • Video Standard : H.264/H.265 • Video Resolution : Main Stream: 1080P@30fps , 720P@30fps Sub stream: D1/VGA/360P@30fps • Video Bitrates : 32Kbps - 5Mbps, VBR/CBR • Audio Standard : G.711-u/G.711-a • OSD Overlay: Title and Time overlay • IR Led: 10PCS SMD Array IR Led • IR Distance: 15 Meters • FOV : 1/2.8 101.34° x 54.46° x 119.72° (H x V x D), 2.8mm • Lens Focal length: HD 2.8mm fixed lens • Motion Detection: Schedule/Detection area/Trigger Recording/Trigger Snapshot/Link Blink/Upload Alarm Centre/Trigger Audio 	<p>Multiple Language</p> <ul style="list-style-type: none"> • English/Chinese/Russian/Deutsch/Italiano/Türkiye/Polksi/Korean/Greek/Arabic/Japanese <p>APP and Software Control</p> <ul style="list-style-type: none"> • Windows: Web browser, AirCam64 • iOS/Android: Download "Videolink" App from APP/Play Store) • *NVR APP iOS/Android: Download "Guard Viewer" App from APP/Play Store, (can be used when camera has been added to ANVR.) <p>Power Input</p> <ul style="list-style-type: none"> • Power Supply: 12V DC • Power Consumption: ≤8 W • PoE: 802.3af <p>Environment</p> <ul style="list-style-type: none"> • Operating temperature: -30°C ~ +60°C • Operating Humidity: 10% ~ 90% (non-condensing) <p>Standard package of Camera</p> <ul style="list-style-type: none"> • Product size: φ111 x 63mm Weight: ≤TBD • Package size: TBD cm(L*W*H) • Package content: IP Camera/Network cable/QIG/waterproof connector <p>Ordering information</p> <ul style="list-style-type: none"> • AirLive MD-215 2MP 15M IR POE Mini Dome IP Camera

* Specification will be changed without prior notice

* All trademarks, logos and brand names are the property of their respective owners.

